

Test Protocol 2349 Inspection Device

Burst Pressure Tester 2349-000 24.03.2021 06:44 Login: Admin **Log off**

Recipes: Create new

Main

Recipes

Edit

Create new

Create from template

Delete

Import

Export

Settings

Control

General

Common recipe information

balloon 10x25 V0 Print Save Close

Recipe parameters

Start Testing

Zoom in

Test type

Burst pressure

Fatigue resistance

Inflation/Deflation time

Compliance

Name	Value	Mod	Min	Max
Nominal burst pressure (bar)	5.00	<input type="checkbox"/>	---	---
Fill rate (ml/s)	2.0	<input type="checkbox"/>	---	---
Luer-Button	no	<input type="checkbox"/>	---	---
Total burst calculation	With k-factor	<input type="checkbox"/>	---	---
Lower warning limit (bar)	3.00	<input type="checkbox"/>	---	---
Upper warning limit (bar)	10.00	<input type="checkbox"/>	---	---

Number of tests per order

Name	Value	Mod	Min	Max
Determination number of tests	per phase	<input type="checkbox"/>	---	---
Count: before order	2	<input type="checkbox"/>	---	---
Count: start order	5	<input type="checkbox"/>	---	---
Count: middle order	5	<input type="checkbox"/>	---	---
Count: end order	5	<input type="checkbox"/>	---	---

Burst Pressure Tester 2349-000 24.03.2021 06:45 Login: OP **Log off**

Main: Process overview

Process overview

Alarms and warnings

Alarm history

User settings

Protocol

Order history

Control chart

Machine information

Exit

Order overview

Order no. 12345

Recipe Production\balloon 10x25

Article no. 123 Examiner OP

Progress: Before 0 / 2

Start 0 / 5

Middle 0 / 5

End 0 / 5

Nominal burst pressure: 5.00 bar

Calculated burst pressure: ---

Finished tests

No.	Burst	Crack	Loc.

Compliance Chart

Druck [bar]

Current process

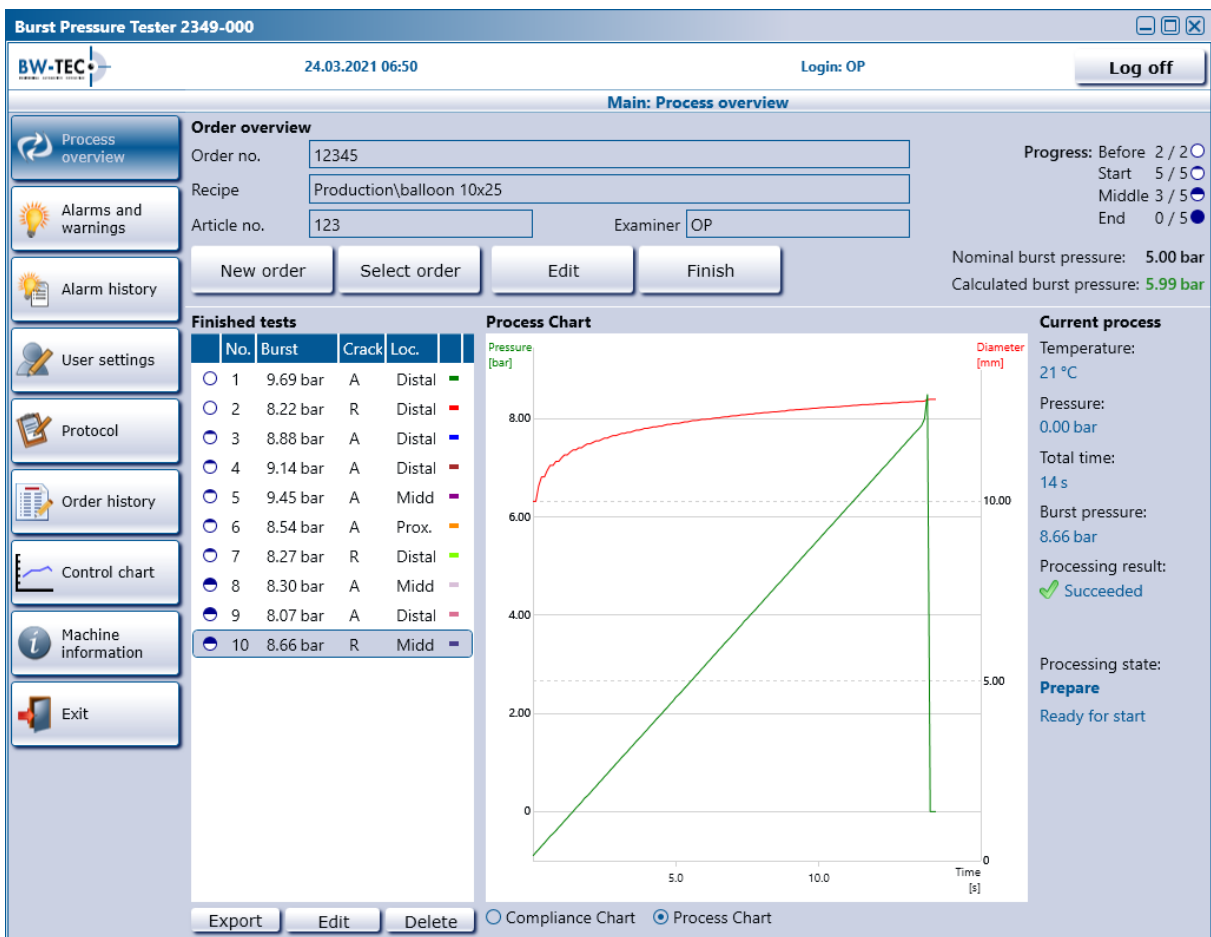
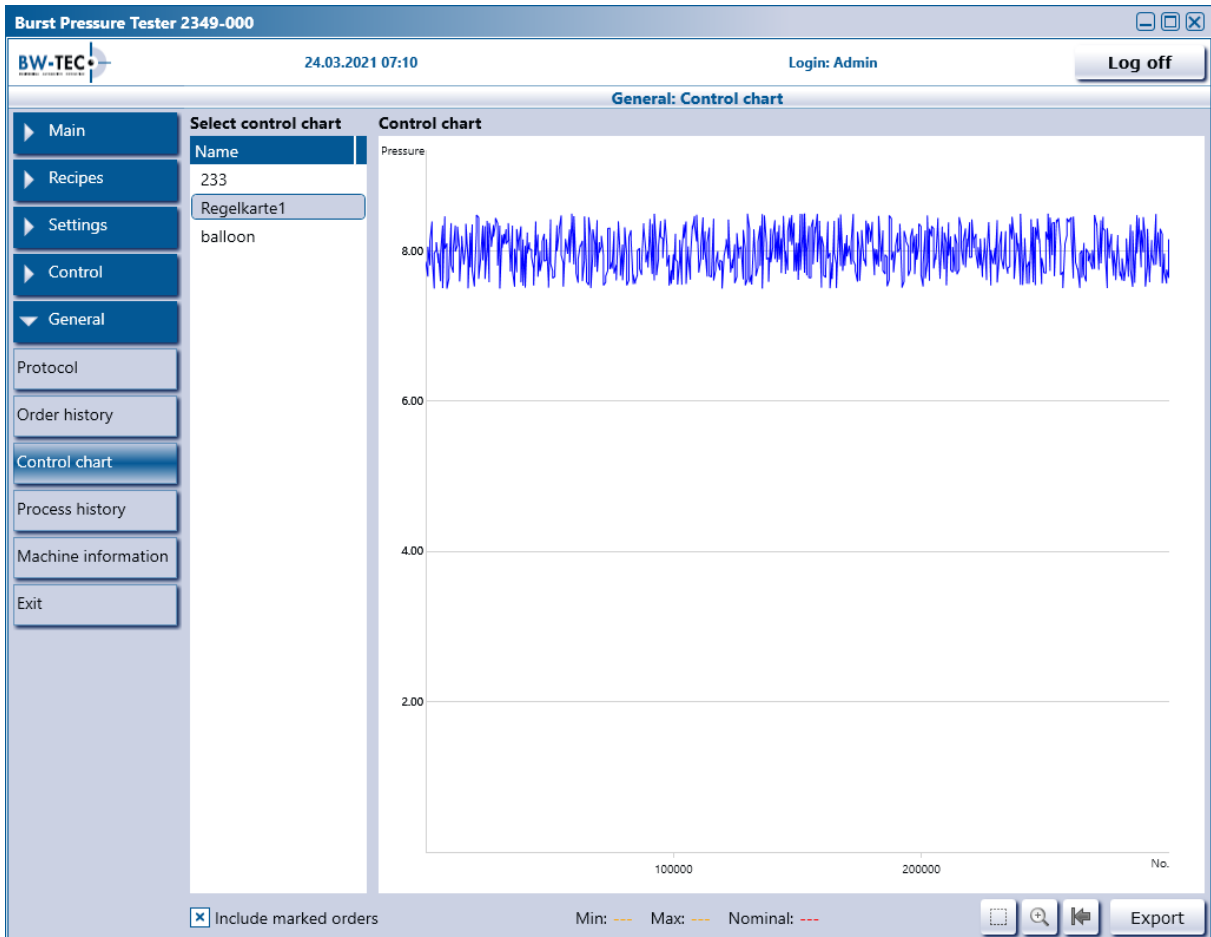
Temperature: 0 °C

Pressure: 0.00 bar

Processing state: **Prepare**

Please insert product and press 'Start' button

Export Edit Delete Compliance Chart Process Chart



Test protocol



Order no.: 12345

Article no.: 123

Recipe: Production\balloon 10x25

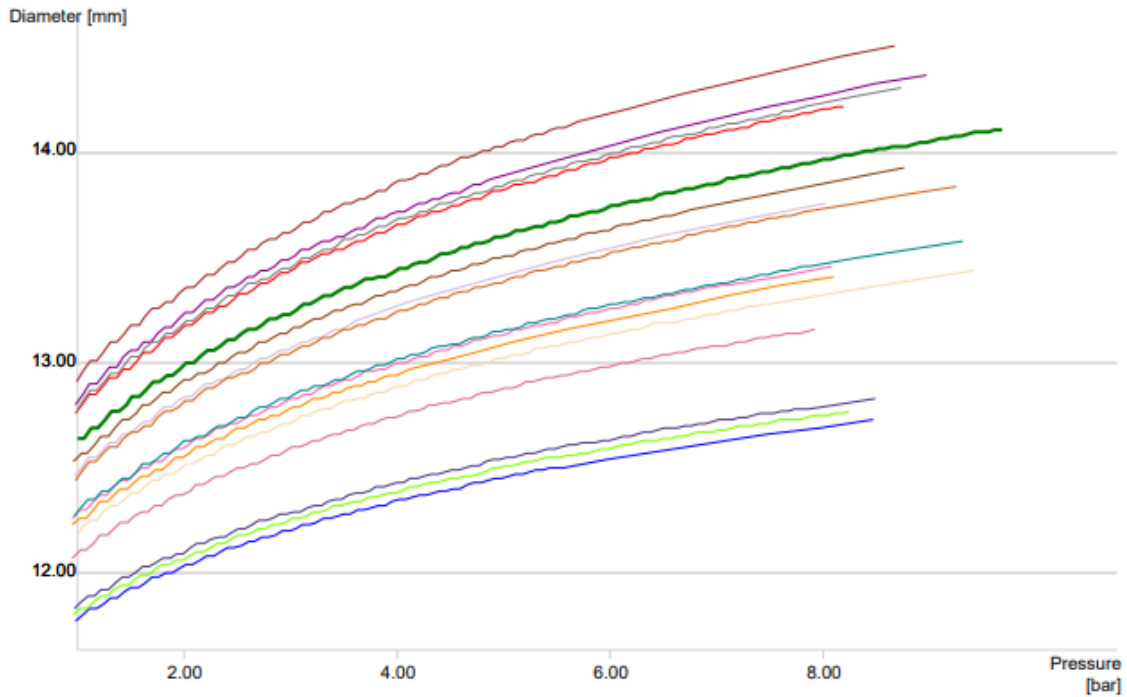
Finished on: 24.03.2021 06:53:36

Comment: OK

Nominal burst pressure:: 5.00 bar

Calculated burst pressure:: 6.36 bar

Result: Succeeded



	Phase	Crack	Location	Burst	Examiner	Comment
1	Before order	A	Distal	9.69 bar	OP	
2	Before order	R	Distal	8.22 bar	OP	
3	Start order	A	Distal	8.88 bar	OP	
4	Start order	A	Distal	9.14 bar	OP	
5	Start order	A	Middle	9.45 bar	OP	
6	Start order	A	Prox.	8.54 bar	OP	
7	Start order	R	Distal	8.27 bar	OP	
8	Middle order	A	Middle	8.30 bar	OP	
9	Middle order	A	Distal	8.07 bar	OP	
10	Middle order	R	Middle	8.66 bar	OP	
11	Middle order	A/R	Distal	8.12 bar	OP	
12	Middle order	R	Distal	8.77 bar	OP	
13	Order end	A	Distal	9.44 bar	OP	
14	Order end	A	Distal	8.91 bar	OP	
15	Order end	A	Middle	8.19 bar	OP	
16	Order end	R	Distal	9.63 bar	OP	
17	Order end	A/R	Prox.	9.34 bar	OP	

Test Protocol Compliance Test

Overview

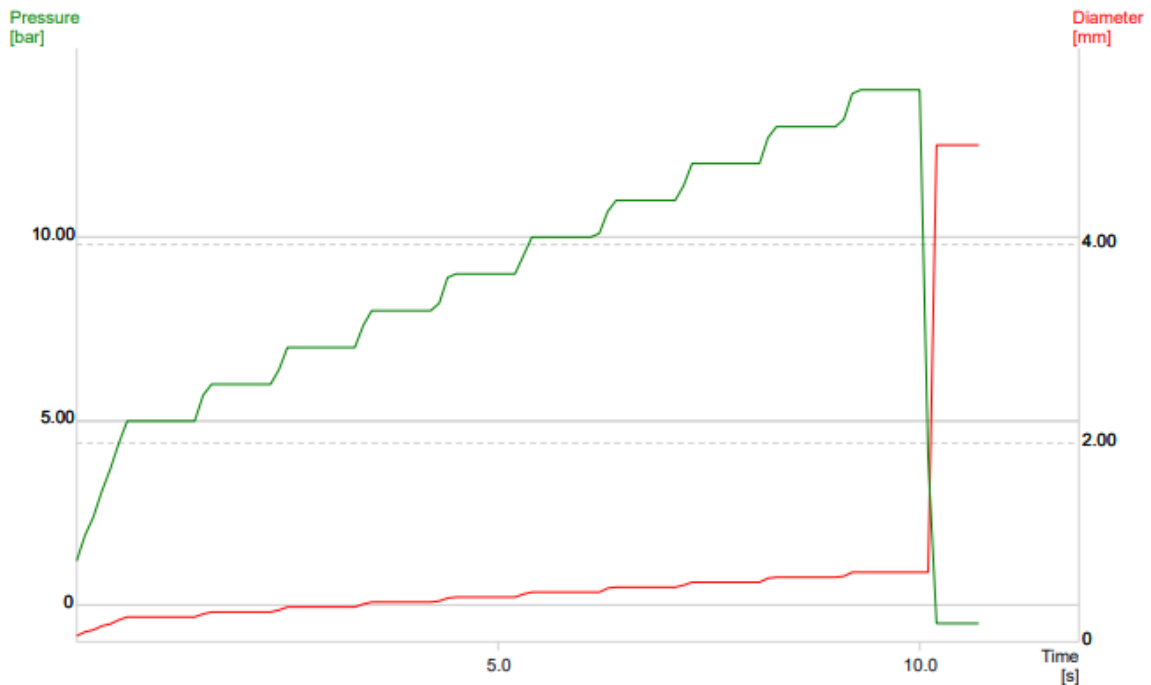
Common	
Machine	2349-000
Machine ID	---
Recipe name	Production\compliance V5
Operator	Admin
Process start-time	24.03.2021 07:01
Process end-time	24.03.2021 07:01
Result	Succeeded

Others	
Total time (s)	10
Article	---
Article no.	---
Lot	---
Comment	---
Max. pressure diff. (bar)	0.00
Max. pressure diff. (kPa)	0

Recipe details

Start	
Connection	Luer
Origin pressure (bar)	1.00
Pressure ctr. amplification	0.20
Diameter (mm)	1.00
Approx. volume (ml)	0.0
Offset Position (mm)	0.0
Delay time (s)	0
With balloon protective cover	no
No. of bleeding cycles	1
Duration of vacuum	1.0

Testing	
Test type	Compliance
Maintain pressure	no
Pressure (bar)	5.00
Tolerance (bar)	0.10
Fill rate (ml/s)	1.0
Pressure ctr. amplification	0.20
Dwell time (s)	5.0
Deflate rate (ml/s)	8.0
Pressure increase (bar)	1.00
No. of measurements	10



Data points after increase

Measurement	Pressure (bar)	Pressure (kPa)	Diameter (mm)
Measurement 1	5.00	500	0.25
Measurement 2	6.00	600	0.30
Measurement 3	7.00	700	0.35
Measurement 4	8.00	800	0.40
Measurement 5	9.00	900	0.45
Measurement 6	10.00	1000	0.50
Measurement 7	11.00	1100	0.55
Measurement 8	12.00	1200	0.60
Measurement 9	13.00	1300	0.65
Measurement 10	14.00	1400	0.70